

ReactorConnect™

Reactor Connect

- Reactor App being renamed Reactor Connect
- Launching at SPFA 2020: February 12th
- Introducing Account Management
- Introducing Reactor Connect website



App Tile Logo

ReactorConnect™

Benefits of Account Management

- Better manage your equipment and crews by controlling who has access to your Reactors and Reactor data
- Provides easy Reactor visibility to all Company members without each person having to scan the QR code of each Reactor
 - The QR code can be reset on the Reactor and company members will not lose visibility to the Reactor
- All reports are only available if you belong to a Company
- Automatic Daily/Weekly/Monthly emails will be sent to members of a Company
- Graco can provide technical assistance directly to a customer
- Coming soon: Ability to run reports from the Reactor Connect website

How to Set-up Account Management

- 4 Step Process
 - 1st Create a User Account
 - 2nd Create a Company
 - 3rd Invite other Users to join your Company
 - 4th Assign Reactors to your Company



1st - Creating a User Account



- New app version will request a User to create an account when opening the app
 - Not required, may choose to skip this step
 - Without a User account reports will no longer be available
 - Requests basic information: name, email, phone number
 - Allows Graco to offer Technical Support direct to Reactor user

2nd - Creating a Company



- Creating a Company will allow Reactors to be assigned to your Company and allow other Users to be invited to join your Company
 - Makes access to viewing Reactor data easier for all Company members
 - Provides automatically emailed reports
- Having a Company is required to view reports
- Having a Company will allow reports to be run using the Reactor Connect website (coming soon)
- Having a Company is not required to continue to still use the multi-system dashboard and Reactor control features of the app

3rd - Inviting other Users to join Company

- Any User in a Company can scan the Reactor's QR code to provide Reactor visibility to all other Company members
- All Company members may receive automated emailed reports
- All Company members have access to run other Reactor Connect reports
- Company Admin may chose to allow sprayers to still use Reactor App without belonging to the Company or having a User account
 - No access to reports
 - Will still allow Reactor control using phone

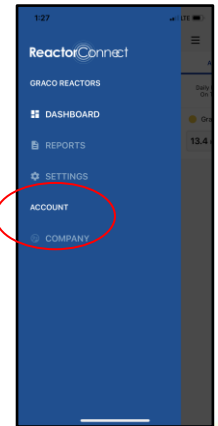
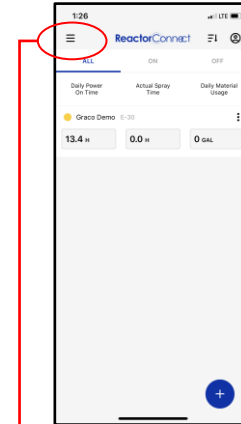
4th - Assigning Reactor's to Company



- Provides security to who can see and not see Reactor data using Reactor Connect
 - Members of a Company can be added and deleted
- Provides Reactor visibility to all Company members
 - Reactor appears on multi-system dashboard, main Reactor control screen and access to reports
- Any Company member can scan the Reactor QR code with their phone using the Reactor Connect app to provide visibility to all Company members

Account Set-up

- Reactor Connect App or website
 - Create User accounts
 - Create a Company
 - Invite Users to join Company
 - Administering Reactors and Users of a Company
- Recommend using the website for ease of use:
 - <https://www.reactorconnect.graco.com/>



Company Roles: Admin vs. User

- The person who creates the Company will by default be an “Admin”
- An Admin has the authorization to make changes to the Company account. These changes include:
 - Inviting people to join the company
 - Deleting Users from the company
 - Deleting Reactors from the company
 - Deleting the Company account
 - Assigning Company members as Admins or Users
- A basic User (non-Admin) does not have any authorization to make changes to the Company
 - A User can assign Reactors to the Company and can view Reactor data.

Permissions: View only vs. Reactor Control



- All members of a Company have visibility to Reactors owned by the company
 - View Only: If you have not personally scanned the QR code you can not make changes or control the Reactor using the app
 - Reactor Control: Reactor control requires personally scanning the Reactor QR code with phone to be used for control
 - Prevents non-sprayers from making accidental changes to the Reactor

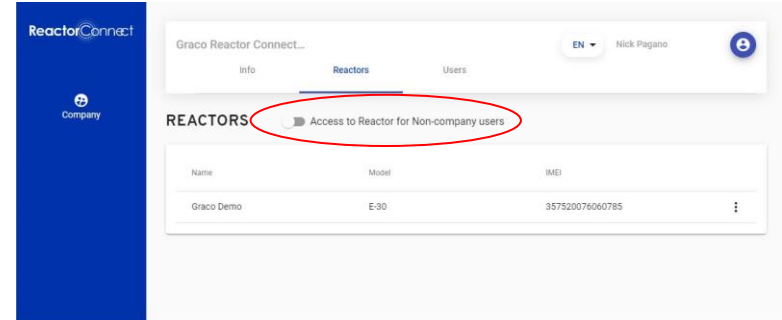
Receiving Emailed Reports

- All Company members are set-up to automatically receive Daily, Weekly and Monthly Summary Reports
 - Each User can decided to turn this feature on/off
 - This is the same report that can be manually generated by running the Summary Report for the same date range



Sprayers: User vs. Non-User

- The Admin can decide if sprayers will be members or non-members of a Company
 - If sprayers are Company members, they are invited to join the Company
 - Pro: Users can be deleted from a Company
 - Pro: Users have access to run reports
 - If sprayers are Non-Members, in Company profile an Admin toggles switch “Access to Reactor for Non-Company Users”
 - Pro: Simplifies account management
 - Con: Reactor QR code must be reset to prevent unwanted access to Reactors
 - Con: Sprayers can not run reports



How to Set-up Multi-Branch Locations

- Companies with multiple locations need to decide if they would like to manage each location as a unique Reactor Connect company or have all branches under one Reactor Connect company



Ex 1: Company using one account for all locations

A company has 3 branches and the owner would like to see all Reactor data for all the machines:

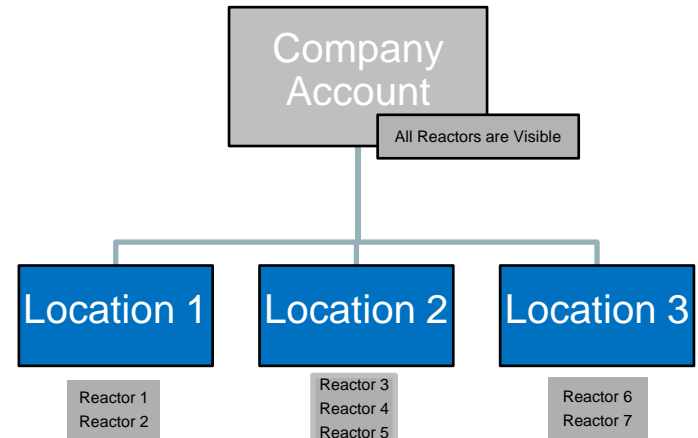
- One company should be set up and users from all three branches should be invited to one company
- This will allow the users of the company to see all machines regardless of what branch they belong to

- **Pros:**

- Everyone at the company has visibility to all company machines
- Reports can be run that will summarize all company machines

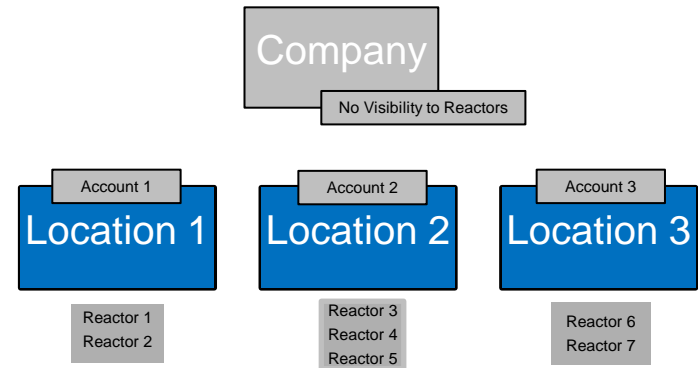
- **Cons:**

- Viewing dashboard and reports may get cumbersome as the number of Reactors increases
 - *Filtering options coming soon*



Ex 2: Company using different accounts for each location

- A company has 3 branches and each branch manages their own equipment and no one from a corporate level needs/wants to see Reactor information from all branches
 - Each branch can be set-up as an individual company
- Pros:
 - Reports and dashboard only include the machines at one branch and the data includes a smaller set of Reactors so the data easier to read and manage
- Cons:
 - You will not be able to see one dashboard or run reports to show all machines from all branches
 - A User (unique email address) can only be invited to join of one company
 - Using multiple email addresses to be a member of multiple companies may be an option



Naming Tips for Multiple Branches

- If you choose to set up one company and have all locations under one company, it may be helpful to name each of your Reactors with the branch name/number first followed by a unique name for each Reactor.
 - This will allow for all Reactors at one location to be grouped together on the reports and dashboard. This will make it easier to manage particular machines if you only have an interest in particular locations.
 - *Example:*
 - Atlanta Rig #1
 - Atlanta Rig #2
 - Minneapolis Rig #1
 - Minneapolis Rig #2
 - Minneapolis Rig #3
 - Phoenix Rig #1
 - Phoenix Rig #2
 - *Example:*
 - Branch 101, Truck 2, R2 E30
 - Branch 101, Truck 3, R2 H30
 - Branch 101, Truck 5, R1 E30
 - Branch 120, Truck 1, R2 E30 right
 - Branch 120, Truck1, R2 E30 left
 - Branch 137, Truck 4, R2 E30

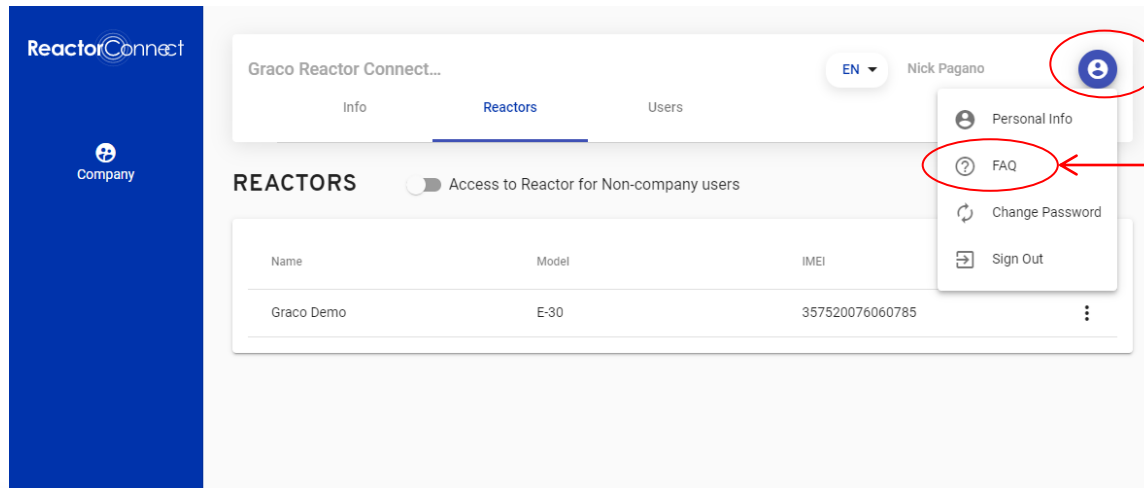
Coming Soon: Reactor Filtering Capability

- Choose to filter by characters in Reactor name or by picking individual Reactors from a list
- Filtering will provide an easy way to view only particular Reactors on multi-system dashboard and reports

FAQ's



- FAQ's are available on the Reactor Connect website that address many of the topics addressed in this presentation
 - Found under Profile icon on Reactor Connect website



Training

- An overview video is available that will explain the benefits of Reactor Connect and account management
- A tutorial video is available to review the account management set-up process:
 - [How to create a User account and Company](#)
 - [How to assign Reactors to a Company](#)

